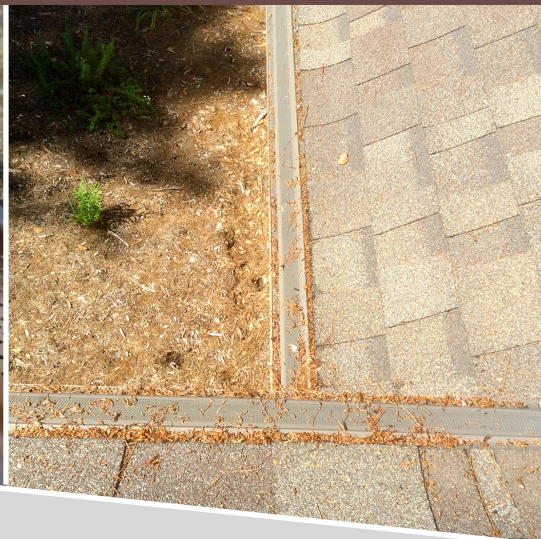
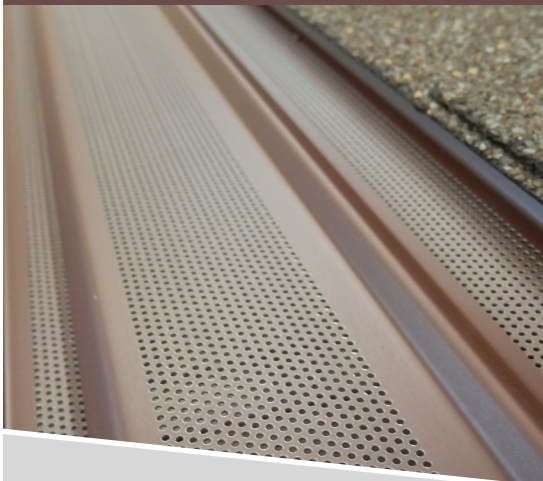


NEEDLE GUARD™

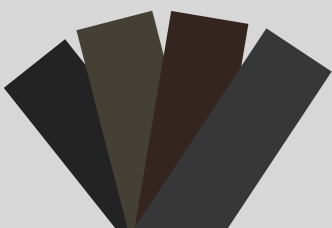
FOR THOSE ... LITTLE THINGS IN LIFE.

Gutter overflows can quickly cause damage to landscaping, ruin basements and destroy the foundation of a home or structure. Improperly cared for gutters can also lead to other serious and possibly more unnoticeable problems, including, but not limited to, mold, mildew and rot. Needle Guard™ is specifically designed with micro-perforations that allow rainwater to enter the gutter and flow smoothly while keeping pine needles from clogging the system. Needle Guard™ has passed rigorous independent testing and is certified to endure 110 mph winds (category 2 hurricane) with no lift or movement. It is made with high-quality heavy gauge aluminum and can withstand 17 inches of rainfall per hour and heavy snow and ice. It will perform as promised even in the harshest weather conditions, keeping you safely off your roof!

- .045 perforated holes
- Compatible with all roof styles
- Can hold up to 1200 lbs per square foot – heavy snow and ice will not affect performance
- Easy installation over existing gutters by attaching to the roof deck – no mounting brackets or hangers
- Prevents pine needles and debris from entering gutters
- Reduces home and building maintenance costs
- Will not void your shingle warranty
- Made in the USA
- 20-year transferable paint finish warranty



AVAILABLE IN 4 COLORS



Fits 5" and 6" gutters
Specifically made for
pine needles

MANUFACTURED BY
GCI **GUTTER COVERS**
INTERNATIONAL®