

ACCESSORIES

END CAPS



DESCRIPTION	ITEM ID LEFT	ITEM ID RIGHT	COLORS	PRICE/EACH
.027 Aluminum	LECBK	RECBK	Black	\$1.39
.027 Aluminum	LECBLUE	RECBLUE	Blue	\$1.39
.027 Aluminum	LECBZ	RECBZ	Bronze	\$1.39
.027 Aluminum	LECCCLONE	RECCCLONE	Copper Clone	\$2.74
.027 Aluminum	LECCHR	RECCHR	Charcoal	\$1.39
.027 Aluminum	LECCLAY	RECCLAY	Clay	\$1.39
14 oz Copper	LECCPR	RECCPR	Copper*	\$10.84
.027 Aluminum	LECGRN	RECGRN	Green	\$1.39
.027 Aluminum	LECLG	RECLG	Light Gray	\$1.39
.027 Aluminum	LECMB	RECMB	Musket Brown	\$1.39
.027 Aluminum	LECRB	RECRB	Royal Brown	\$1.39
.027 Aluminum	LECREd	RECREd	Red	\$1.39
.027 Aluminum	LECTAN	RECTAN	Tan	\$1.39
.027 Aluminum	LECWH	RECWH	White	\$1.39

*Minimum purchase 20 per side
 *Box=100
 *Copper accessories no minimum

WINGS



DESCRIPTION	ITEM ID	COLORS	PRICE/EACH
.024 Aluminum, Flat piece 4" x 1 1/4"	WNGBK	Black	\$0.69
.024 Aluminum, Flat piece 4" x 1 1/4"	WNGBLUE	Blue	\$0.69
.024 Aluminum, Flat piece 4" x 1 1/4"	WNGBZ	Bronze	\$0.69
.024 Aluminum, Flat piece 4" x 1 1/4"	WNGCCLONE	Copper Clone	\$1.30
.024 Aluminum, Flat piece 4" x 1 1/4"	WNGCHR	Charcoal	\$0.69
.024 Aluminum, Flat piece 4" x 1 1/4"	WNGCLAY	Clay	\$0.69
14 oz Copper, Flat piece 4" x 1 1/4"	WNGCPR	Copper*	\$5.23

END CAP DIVERTERS



DESCRIPTION	ITEM ID LEFT	ITEM ID RIGHT	COLORS	PRICE/EACH
.027 Aluminum	LECBK	RECBK	Black	\$0.65
.027 Aluminum	LECBLUE	RECBLUE	Blue	\$0.65
.027 Aluminum	LECBZ	RECBZ	Bronze	\$0.65
.027 Aluminum	LECCCLONE	RECCCLONE	Copper Clone	\$1.30
.027 Aluminum	LECCHR	RECCHR	Charcoal	\$0.65
.027 Aluminum	LECCLAY	RECCLAY	Clay	\$0.65
14 oz Copper	LECCPR	RECCPR	Copper*	\$5.16
.027 Aluminum	LECGRN	RECGRN	Green	\$0.65
.027 Aluminum	LECLG	RECLG	Light Gray	\$0.65
.027 Aluminum	LECMB	RECMB	Musket Brown	\$0.65
.027 Aluminum	LECRB	RECRB	Royal Brown	\$0.65
.027 Aluminum	LECREd	RECREd	Red	\$0.65
.027 Aluminum	LECTAN	RECTAN	Tan	\$0.65
.027 Aluminum	LECWH	RECWH	White	\$0.65

*Minimum purchase 20 per side
 *Box=100
 *Copper accessories no minimum

Wings continued...

.024 Aluminum, Flat piece 4" x 1 1/4"	WNGGRN	Green	\$0.69
.024 Aluminum, Flat piece 4" x 1 1/4"	WNGLG	Light Gray	\$0.69
.024 Aluminum, Flat piece 4" x 1 1/4"	WNGMB	Musket Brown	\$0.69
.024 Aluminum, Flat piece 4" x 1 1/4"	WNGRB	Royal Brown	\$0.69
.024 Aluminum, Flat piece 4" x 1 1/4"	WNGRED	Red	\$0.69
.024 Aluminum, Flat piece 4" x 1 1/4"	WNGTAN	Tan	\$0.69
.024 Aluminum, Flat piece 4" x 1 1/4"	WNGWH	White	\$0.69

*Minimum purchase 25 pieces
 *Box=100
 *Used to cover any additional opening
 *Copper accessories no minimum

ACCESSORIES CONTINUED...

ZIP SCREWS #8 X 1/2" HEX



DESCRIPTION	ITEM ID	COLORS	PRICE /BAG	PRICE /BOX
#8 x 1/2" Hex 410 Stainless	1/2"HXBK	Black	\$4.91	\$45.05
#8 x 1/2" Hex 410 Stainless	1/2"HXBLUE	Blue	\$4.91	\$45.05
#8 x 1/2" Hex 410 Stainless	1/2"HXBZ	Bronze	\$4.91	\$45.05
#8 x 1/2" Hex 410 Stainless	1/2"HXCCLONE	Copper Clone	\$4.91	\$45.05
#8 x 1/2" Hex 410 Stainless	1/2"HXCHR	Charcoal	\$4.91	\$45.05
#8 x 1/2" Hex 410 Stainless	1/2"HXCLAY	Clay	\$4.91	\$45.05
#8 x 1/2" Hex 410 Stainless	1/2"HXBRS	Brass	\$18.95	\$189.50
#8 x 1/2" Hex 410 Stainless	1/2"HXGRN	Green	\$4.91	\$45.05
#8 x 1/2" Hex 410 Stainless	1/2"HXLG	Light Gray	\$4.91	\$45.05
#8 x 1/2" Hex 410 Stainless	1/2"HXMB	Musket Brown	\$4.91	\$45.05
#8 x 1/2" Hex 410 Stainless	1/2"HXRB	Royal Brown	\$4.91	\$45.05
#8 x 1/2" Hex 410 Stainless	1/2"HXRED	Red	\$4.91	\$45.05
#8 x 1/2" Hex 410 Stainless	1/2"HXTAN	Tan	\$4.91	\$45.05
#8 x 1/2" Hex 410 Stainless	1/2"HXWH	White	\$4.91	\$45.05

*Suggested Use: Attaching gutter cover to lip of gutter.

*Bags=100, Box=1000

ZIP SCREWS #8 X 1" HEX



DESCRIPTION	ITEM ID	COLORS	PRICE /BAG	PRICE /BOX
#8 x 1" Hex 410 Stainless	1"HXBK	Black	\$6.52	\$52.80
#8 x 1" Hex 410 Stainless	1"HXBZ	Bronze	\$6.52	\$52.80
#8 x 1" Hex 410 Stainless	1"HXCHR	Charcoal	\$6.52	\$52.80
#8 x 1" Hex 410 Stainless	1"HXRB	Royal Brown	\$6.52	\$52.80
#8 x 1" Hex 410 Stainless	1"HXWH	White	\$6.52	\$52.80

*Suggested Use: Fascia mount installations.

*Bags=100, Box=1000

ZIP SCREWS #8 X 1 1/4" SQUARE DRIVE



DESCRIPTION	ITEM ID	COLORS	PRICE /BAG	PRICE /BOX
#8 x 1 1/4" Square Drive Deck	1 1/4"SDGRN	Green	\$4.51	\$26.91

*Suggested Use: Under the shingle application.

*Bags=100, Box=1000

ZIP SCREWS #8 X 1/2" SQUARE DRIVE



DESCRIPTION	ITEM ID	COLORS	PRICE /BAG	PRICE /BOX
#8 x 1/2" Square Drive Panhead, 410 Stainless	1/2"SDBK	Black	\$4.21	\$37.08
#8 x 1/2" Square Drive Panhead, 410 Stainless	1/2"SDBLUE	Blue	\$4.21	\$37.08
#8 x 1/2" Square Drive Panhead, 410 Stainless	1/2"SDBZ	Bronze	\$4.21	\$37.08
#8 x 1/2" Square Drive Panhead, 410 Stainless	1/2"SDCCLONE	Copper Clone	\$4.21	\$37.08
#8 x 1/2" Square Drive Panhead, 410 Stainless	1/2"SDCHR	Charcoal	\$4.21	\$37.08
#8 x 1/2" Square Drive Panhead, 410 Stainless	1/2"SDCLAY	Clay	\$4.21	\$37.08
#8 x 1/2" Square Drive Panhead, 410 Stainless	1/2"SDBRS	Brass	\$18.75	\$189.50
#8 x 1/2" Square Drive Panhead, 410 Stainless	1/2"SDLG	Light Gray	\$4.21	\$37.08
#8 x 1/2" Square Drive Panhead, 410 Stainless	1/2"SDMB	Musket Brown	\$4.21	\$37.08
#8 x 1/2" Square Drive Panhead, 410 Stainless	1/2"SDRB	Royal Brown	\$4.21	\$37.08
#8 x 1/2" Square Drive Panhead, 410 Stainless	1/2"SDRED	Red	\$4.21	\$37.08
#8 x 1/2" Square Drive Panhead, 410 Stainless	1/2"SDTAN	Tan	\$4.21	\$37.08
#8 x 1/2" Square Drive Panhead, 410 Stainless	1/2"SDWH	White	\$4.21	\$37.08

*Suggested Use: Attaching gutter cover to lip of gutter.

*Bags=100, Box=1000

B-2 VALLEY DIVERTERS



DESCRIPTION	ITEM ID	COLORS	PRICE/EACH
Surface Mounted	DIVB-2BK	Black	\$7.85
Surface Mounted	DIVB-2BZ	Bronze	\$7.85
Surface Mounted	DIVB-2CHR	Charcoal	\$7.85
Surface Mounted	DIVB-2LG	Light Gray	\$7.85
Surface Mounted	DIVB-2RB	Royal Brown	\$7.85

*Minimum purchase 10

BRACKET FOR 2000 SERIES LT



DESCRIPTION	ITEM ID	COLORS	PRICE/EACH
.045 Aluminum, 2" x 1 1/4"	Adaptor 2000 Series	Aluminum	\$1.79

*Suggested Use: For 2000 Series Leaf Terminator®

BOX GUTTER ADAPTOR



DESCRIPTION	ITEM ID	COLORS	PRICE/FT.
.024 Aluminum, X 58" Length	BOXRB	Royal Brown	\$0.66
14 oz Copper, X 58" Length	BOXCPR	Copper	\$3.67
.024 Aluminum, X 58" Length	BOXWH	White	\$0.66

*Minimum purchase 1 Box=100 ft. (21, 4' 10" pieces)

VINYL GUTTER COVERS



DESCRIPTION	ITEM ID	COLORS	PRICE/FT.
.110 x 500 Openings (1/8 x 1/2 grate slots) .060 Vinyl	VGCWH	White	\$1.49

*Minimum purchase 1 Box=100 ft. (26 pieces)

B-1 VALLEY DIVERTERS



DESCRIPTION	ITEM ID	COLORS	PRICE/EACH
Recessed with Holes	DIVB-1BK	Black	\$13.20
Recessed with Holes	DIVB-1BZ	Bronze	\$13.20
Recessed with Holes	DIVB-1CHR	Charcoal	\$13.20
Recessed with Holes	DIVB-1LG	Light Gray	\$13.20
Recessed with Holes	DIVB-1RB	Royal Brown	\$13.20

*Minimum purchase 10

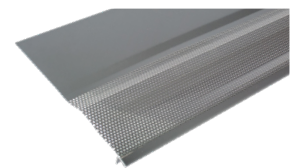
PROMO SAMPLE BOX



DESCRIPTION	ITEM ID	ALL PRODUCTS	N/C
Promotion Sample Boxes with all Products*	Promo Sample Box		N/C
Color Rings (Color chips on 1" Rings)	Color Rings		N/C

Specific samples and color rings required

LEAFLESS COVER



*While supplies last

DESCRIPTION	ITEM ID	COLORS	PRICE/FT.
.032 Aluminum 5", .096 Perforations	LLCHR5"	Charcoal	\$0.99
.032 Aluminum 5", .096 Perforations	LLG5"	Light Gray	\$0.99
.032 Aluminum 5", .096 Perforations	LLRB5"	Royal Brown	\$0.99
.032 Aluminum 5", .096 Perforations	LLWH5"	White	\$0.99
.032 Aluminum 6", .096 Perforations	LLBZ6"	Bronze	\$1.19
.032 Aluminum 6", .096 Perforations	LLRB6"	Royal Brown	\$1.19
.032 Aluminum 6", .096 Perforations	LLWH6"	White	\$1.19

*Fits 5" and 6" gutters, 36" x 8.25", 180' per box

*Fits 6", 7" and 8" gutters, 36" x 11.5", 90' per box

*Minimum purchase 1 Box

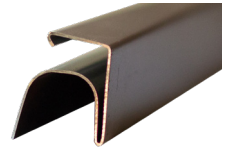
ROOF EDGING



DESCRIPTION	ITEM ID	COLORS	PRICE/FT.
.024 Aluminum, 3" X 2" X 96" Width, 180° Edges for Strength	EDGINGWH	White	\$0.68*
.024 Aluminum, 3" X 2" X 96" Width, 180° Edges for Strength	EDGINGRB	Royal Brown	\$0.68

*Minimum purchase 1 Box=200 ft. (25, 8' pieces)

HALF ROUND ADAPTOR



DESCRIPTION	ITEM ID	COLORS	PRICE/FT.
.024 Aluminum, X 58" Length	HALFRB	Royal Brown	\$0.66
14 oz Copper, X 58" Length	HALFCPR	Copper	\$3.67
.024 Aluminum, X 58" Length	HALFWH	White	\$0.66

*Minimum purchase 1 Box=100ft (21, 4' 10" pieces)

SHOWROOM DISPLAYS

STANDS



DESCRIPTION	ITEM ID	COLORS	PRICE/EACH
Display Stands	18"BK	Black	\$388.00
Display Stands	18"RED	Red	\$388.00
Display Stands	30"BK	Black	\$438.00
Display Stands	30"RED	Red	\$438.00
Display Stands	60"BK	Black	\$810.00
Display Stands	60"RED	Red	\$810.00
Display Stands	72"BK	Black	\$878.75

DISPLAY UNITS



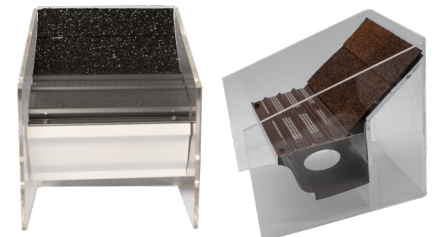
DESCRIPTION	ITEM ID	COLORS	PRICE/EACH
Display Units	18"BK	Black	\$564.00
Display Units	18"RED	Red	\$564.00
Display Units	30"BK	Black	\$720.00
Display Units	30"RED	Red	\$720.00
Display Units	30"YLW	Yellow	\$720.00
Display Units	60"BK	Black	\$898.00
Display Units	60"RED	Red	\$898.00
Display Units	60"YLW	Yellow	\$898.00

DISPLAY UNITS WITH STANDS



DESCRIPTION	ITEM ID	COLORS	PRICE/EACH
Display Units with Stands	18"BKSTAND	Black	\$952.00
Display Units with Stands	18"REDSTAND	Red	\$952.00
Display Units with Stands	30"BKSTAND	Black	\$1158.00
Display Units with Stands	30"REDSTAND	Red	\$1158.00

SINK UNITS



DESCRIPTION	ITEM ID	COLORS	PRICE/EACH
Sink Unit Display	10"	Shingles	\$46.00
Sink Unit Display	10"FLAT	Flat Roof	\$49.00
Sink Unit Display	10"METAL	Metal Roof	\$49.00
Sink Unit Display	UNITCOMM	Commercial	\$55.56