



2022 Catalog | Gutter Cover Product Solutions Vol. 1



TABLE OF CONTENTS

3

Our **Original Surface Tension**
Gutter Covers

- 3//Gutter Topper®
- 3//Top Guard

4

Our **Premier Residential**
Gutter Covers

- 4//The Leaf Terminator® 1200
- 4//Needle Guard

5

Our **Premier Commercial**
Gutter Covers

- 5//The Leaf Terminator® 1500
- 5//The Leaf Terminator® 2000

6

Our **Most Cost-Effective**
Gutter Covers

- 6//The Versatile Solution™
- 6//The Solution™ 6"
- 6//The Solution™ 5"
- 6//The Solution™ 4½"

7

Accessories

- 7//End Caps
- 7//End Cap Diverters
- 7//Wings
- 8//Zip Screws #8 x ½" Hex
- 8//Zip Screws #8 x 1" Hex
- 8//Zip Screws #8 x 1¼" Square Drive Deck
- 8//Zip Screws #8 x ½" Square Drive
- 9//B-1 Valley Diverters
- 9//B-2 Valley Diverters
- 9//Bracket for 2000 Series LT
- 9//Promo Sample Box
- 9//Box Gutter Adaptor
- 9//Leafless Cover
- 9//Vinyl Gutter Covers

10

Showroom Displays

- 10//Roof Edging
- 10//Half Round Adaptor
- 10//Stands
- 10//Display Units
- 10//Display Units with Stands
- 10//Sink Units

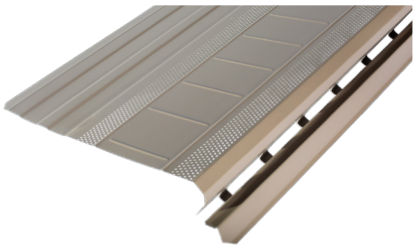
OUR ORIGINAL SURFACE TENSION GUTTER COVERS



GUTTER TOPPER®

DESCRIPTION	ITEM ID	COLORS	PRICE/FT. [100 FT.]	PRICE/FT. [1 SKID]	PRICE/FT. [2+ SKIDS]
.024 Aluminum, Finished Width 11", Skid=800'	GTBK	Black	\$4.37	\$3.67	\$3.46
.024 Aluminum, Finished Width 11", Skid=800'	GTBLUE	Blue	\$4.37	\$3.67	\$3.46
.024 Aluminum, Finished Width 11", Skid=800'	GTBZ	Bronze	\$4.37	\$3.67	\$3.46
.024 Aluminum, Finished Width 11", Skid=800'	GTCHR	Charcoal	\$4.37	\$3.67	\$3.46
.024 Aluminum, Finished Width 11", Skid=800'	GTCLAY	Clay	\$4.37	\$3.67	\$3.46
.024 Aluminum, Finished Width 11", Skid=800'	GTGRN	Green	\$4.37	\$3.67	\$3.46
.024 Aluminum, Finished Width 11", Skid=800'	GTMB	Musket Brown	\$4.37	\$3.67	\$3.46
.024 Aluminum, Finished Width 11", Skid=800'	GTRED	Red	\$4.37	\$3.67	\$3.46
.024 Aluminum, Finished Width 11", Skid=800'	GTRB	Royal Brown	\$4.37	\$3.67	\$3.46
.024 Aluminum, Finished Width 11", Skid=800'	GTTAN	Tan	\$4.37	\$3.67	\$3.46
.024 Aluminum, Finished Width 11", Skid=800'	GTWH	White	\$4.37	\$3.67	\$3.46
16 oz Copper, Finished Width 11", Skid=200'	GTCPR	Copper	\$17.63	N/A	N/A

*Copper products are packaged 50' per Box,
*Aluminum products minimum purchase 100'
*Installation training required for this product
*All gutter covers have one inch overlap for EZ professional seam
*Heated product accessories on page 7

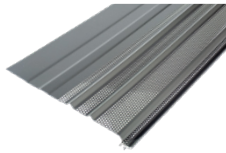


TOP GUARD

DESCRIPTION	ITEM ID	COLORS	PRICE/FT. [100 FT.]	PRICE/FT. [2+ SKIDS]
.024 Aluminum,.070 Perforations, Finished Width 11", Skid=800'	TGBK	Black	\$4.18	\$3.87
.024 Aluminum,.070 Perforations, Finished Width 11", Skid=800'	TGBRZ	Bronze	\$4.18	\$3.87
.024 Aluminum,.070 Perforations, Finished Width 11", Skid=800'	TGCHR	Charcoal	\$4.18	\$3.87
.024 Aluminum,.070 Perforations, Finished Width 11", Skid=800'	TGLG	Light Gray	\$4.18	\$3.87
.024 Aluminum,.070 Perforations, Finished Width 11", Skid=800'	TGRB	Royal Brown	\$4.18	\$3.87

*Aluminum products minimum purchase 100'
*Installation training required for this product
*All gutter covers have one inch overlap for EZ professional seam
*Heated product accessories on page 7

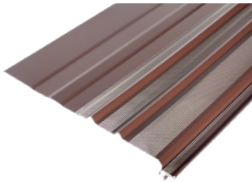
OUR PREMIER RESIDENTIAL GUTTER COVERS



THE LEAF TERMINATOR® 1200

DESCRIPTION	ITEM ID	COLORS	PRICE/FT. (100 FT.)	PRICE/FT. (1+ SKIDS)
.024 Aluminum, Finished Width 9.40", Skid=1000'	I201BK	Black	\$4.42	\$3.54
.024 Aluminum, Finished Width 9.40", Skid=1000'	I201BZ	Bronze	\$4.42	\$3.54
.024 Aluminum, Finished Width 9.40", Skid=1000'	I201CHR	Charcoal	\$4.42	\$3.54
.024 Aluminum, Finished Width 9.40", Skid=1000'	I201LG	Light Gray	\$4.42	\$3.54
.024 Aluminum, Finished Width 9.40", Skid=1000'	I201MB	Musket Brown	\$4.42	\$3.54
.024 Aluminum, Finished Width 9.40", Skid=1000'	I201RB	Royal Brown	\$4.42	\$3.54
.024 Aluminum, Finished Width 9.40", Skid=1000'	I201WH	White	\$4.42	\$3.54
16 oz Copper, Finished Width 9.40", Skid=200'	I201CPR	Copper	\$18.60*	N/A

*Fascia Mount or under shingle application
* Fits 5", 6" and 7" Gutters
* Copper products Box= 50'
*Aluminum products minimum purchase 100'
*All gutter covers have one inch overlap for EZ professional seam

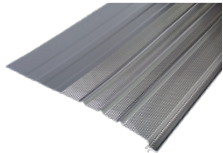


NEEDLE GUARD

DESCRIPTION	ITEM ID	COLORS	PRICE/FT. (100 FT.)	PRICE/FT. (1+ SKIDS)
.024 Aluminum, .045 Perforations, Finished Width 9.40", Skid=1000'	I203BK	Black	\$4.86	\$3.89
.024 Aluminum, .045 Perforations, Finished Width 9.40", Skid=1000'	I203BZ	Bronze	\$4.86	\$3.89
.024 Aluminum, .045 Perforations, Finished Width 9.40", Skid=1000'	I203CHR	Charcoal	\$4.86	\$3.89
.024 Aluminum, .045 Perforations, Finished Width 9.40", Skid=1000'	I203MB	Musket Brown	\$4.86	\$3.89
.024 Aluminum, .045 Perforations, Finished Width 9.40", Skid=1000'	I203WH	White	\$4.86	\$3.89
.024 Aluminum, .045 Perforations, Finished Width 9.40", Skid=1000'	I203RB	Royal Brown	\$4.86	\$3.89

*Fascia Mount or under shingle application
* Fits 5", 6" and 7" Gutters
*Aluminum products minimum purchase 100'
*All gutter covers have one inch overlap for EZ professional seam

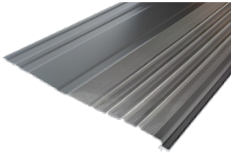
OUR PREMIER COMMERCIAL GUTTER COVERS



THE LEAF TERMINATOR® 1500

DESCRIPTION	ITEM ID	COLORS	PRICE/FT. (100 FT.)	PRICE/FT. (1+ SKIDS)
.032 Aluminum, Finished Width 12.50", Skid=1000'	I500BK	Black	\$5.63	\$4.51
.032 Aluminum, Finished Width 12.50", Skid=1000'	I500BZ	Bronze	\$5.63	\$4.51
.032 Aluminum, Finished Width 12.50", Skid=1000'	I500CHR	Charcoal	\$5.63	\$4.51
.032 Aluminum, Finished Width 12.50", Skid=1000'	I500LG	Light Gray	\$5.63	\$4.51
.032 Aluminum, Finished Width 12.50", Skid=1000'	I500MB	Musket Brown	\$5.63	\$4.51
.032 Aluminum, Finished Width 12.50", Skid=1000'	I500RB	Royal Brown	\$5.63	\$4.51
.032 Aluminum, Finished Width 12.50", Skid=1000'	I500WH	White	\$5.63	\$4.51
20 oz Copper, Finished Width 12.50", Skid=200'	I500CPR	Copper	\$21.90*	N/A

*Fascia Mount or under shingle application
* Fits 5", 6" and 7" Gutters
* Copper products Box= 50', Skid =200'
*Aluminum products minimum purchase 100'
*All gutter covers have one inch overlap for EZ professional seam



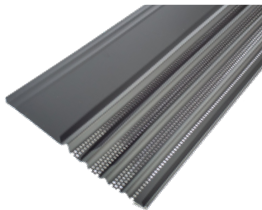
THE LEAF TERMINATOR® 2000

DESCRIPTION	ITEM ID	COLORS	PRICE/FT. (100 FT.)	PRICE/FT. (1+ SKIDS)
.032 Aluminum, Finished Width 17.40", Skid=1000'	2000BK	Black	\$6.20	\$4.96
.032 Aluminum, Finished Width 17.40", Skid=1000'	2000BZ	Bronze	\$6.20	\$4.96
.032 Aluminum, Finished Width 17.40", Skid=1000'	2000CHR	Charcoal	\$6.20	\$4.96
.032 Aluminum, Finished Width 17.40", Skid=1000'	2000RB	Royal Brown	\$6.20	\$4.96
.032 Aluminum, Finished Width 17.40", Skid=1000'	2000WH	White	\$6.20	\$4.96

*Fascia Mount or under shingle application
* Fits 5", 6" and 7" Gutters
*Aluminum products minimum purchase 100'
*All gutter covers have one inch overlap for EZ professional seam
*Bracket required on page 10

OUR MOST COST-EFFECTIVE GUTTER COVERS

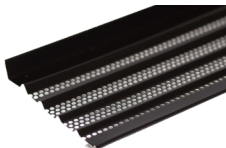
THE VERSATILE SOLUTION™



DESCRIPTION	ITEM ID	COLORS	PRICE/FT. (100 FT.)	PRICE/FT. (2+ SKIDS)
.019 Aluminum, Skid=800'	VSBK	Black	\$2.10	\$1.89
.019 Aluminum, Skid=800'	VSZB	Bronze	\$2.10	\$1.89
.019 Aluminum, Skid=800'	VSCHR	Charcoal	\$2.10	\$1.89
.019 Aluminum, Skid=800'	VSLG	Light Gray	\$2.10	\$1.89
.019 Aluminum, Skid=800'	VSRB	Royal Brown	\$2.10	\$1.89
.019 Aluminum, Skid=800'	VSWH	White	\$2.10	\$1.89

*Fascia Mount or under shingle application
*Fits 4 1/2", 5" and 6" Gutters
*Aluminum products minimum purchase 100'
*All gutter covers have one inch overlap for EZ professional seam

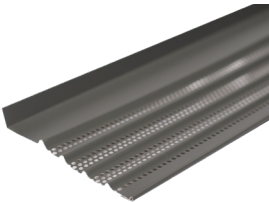
THE SOLUTION™



DESCRIPTION	ITEM ID	COLORS	PRICE/FT. (100 FT.)	PRICE/FT. (2+ SKIDS)
.019 Aluminum, Skid=800'	5BK	Black	\$1.90	\$1.69
.019 Aluminum, Skid=800'	5BZ	Bronze	\$1.90	\$1.69
.019 Aluminum, Skid=800'	5CHR	Charcoal	\$1.90	\$1.69
.019 Aluminum, Skid=800'	5LG	Light Gray	\$1.90	\$1.69
.019 Aluminum, Skid=800'	5RB	Royal Brown	\$1.90	\$1.69
.019 Aluminum, Skid=800'	5WH	White	\$1.90	\$1.69

*Fascia Mount
*Aluminum products minimum purchase 100'
*All gutter covers have one inch overlap for EZ professional seam

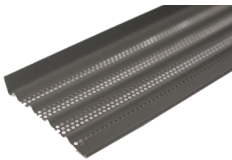
THE SOLUTION™



DESCRIPTION	ITEM ID	COLORS	PRICE/FT. (100 FT.)	PRICE/FT. (2+ SKIDS)
.019 Aluminum, Skid=800'	6BK	Black	\$2.03	\$1.83
.019 Aluminum, Skid=800'	6BZ	Bronze	\$2.03	\$1.83
.019 Aluminum, Skid=800'	6CHR	Charcoal	\$2.03	\$1.83
.019 Aluminum, Skid=800'	6LG	Light Gray	\$2.03	\$1.83
.019 Aluminum, Skid=800'	6RB	Royal Brown	\$2.03	\$1.83
.019 Aluminum, Skid=800'	6WH	White	\$2.03	\$1.83

*Fascia Mount
*Aluminum products minimum purchase 100'
*All gutter covers have one inch overlap for EZ professional seam

THE SOLUTION™



DESCRIPTION	ITEM ID	COLORS	PRICE/FT. (100 FT.)	PRICE/FT. (2+ SKIDS)
.019 Aluminum, Skid=800'	4BZ	Bronze	\$1.84	\$1.65
.019 Aluminum, Skid=800'	4CHR	Charcoal	\$1.84	\$1.65
.019 Aluminum, Skid=800'	4LG	Light Gray	\$1.84	\$1.65
.019 Aluminum, Skid=800'	4RB	Royal Brown	\$1.84	\$1.65
.019 Aluminum, Skid=800'	4WH	White	\$1.84	\$1.65

*Fascia Mount
*Aluminum products minimum purchase 100'
*All gutter covers have one inch overlap for EZ professional seam

ACCESSORIES

END CAPS



DESCRIPTION	ITEM ID LEFT	ITEM ID RIGHT	COLORS	PRICE/ EACH
.027 Aluminum	LECBK	RECBK	Black	\$1.39
.027 Aluminum	LECBLUE	RECBBLUE	Blue	\$1.39
.027 Aluminum	LECBZ	RECBZ	Bronze	\$1.39
.027 Aluminum	LECCCLONE	RECCCLONE	Copper Clone	\$2.74
.027 Aluminum	LECCHR	RECCHR	Charcoal	\$1.39
.027 Aluminum	LECCLAY	RECCLAY	Clay	\$1.39
14 oz Copper	LECCPR	RECCPR	Copper*	\$10.84
.027 Aluminum	LECGRN	RECGRN	Green	\$1.39
.027 Aluminum	LECLG	RECLG	Light Gray	\$1.39
.027 Aluminum	LECMB	RECMB	Musket Brown	\$1.39
.027 Aluminum	LECRB	RECRB	Royal Brown	\$1.39
.027 Aluminum	LECRED	RECRED	Red	\$1.39
.027 Aluminum	LECTAN	RECTAN	Tan	\$1.39
.027 Aluminum	LECWH	RECWH	White	\$1.39

*Minimum purchase 20 per side
*Box=100
*Copper accessories no minimum

WINGS



DESCRIPTION	ITEM ID	COLORS	PRICE/ EACH
.024 Aluminum, Flat piece 4" x 11 3/4"	WNGBK	Black	\$0.69
.024 Aluminum, Flat piece 4" x 11 3/4"	WNGBLUE	Blue	\$0.69
.024 Aluminum, Flat piece 4" x 11 3/4"	WNGBZ	Bronze	\$0.69
.024 Aluminum, Flat piece 4" x 11 3/4"	WNGCCCLONE	Copper Clone	\$1.30
.024 Aluminum, Flat piece 4" x 11 3/4"	WNGCHR	Charcoal	\$0.69
.024 Aluminum, Flat piece 4" x 11 3/4"	WNGCLAY	Clay	\$0.69
14 oz Copper, Flat piece 4" x 11 3/4"	WNGCPR	Copper*	\$5.23

END CAP DIVERTERS



DESCRIPTION	ITEM ID LEFT	ITEM ID RIGHT	COLORS	PRICE/ EACH
.027 Aluminum	LECBK	RECBK	Black	\$0.65
.027 Aluminum	LECBLUE	RECBBLUE	Blue	\$0.65
.027 Aluminum	LECBZ	RECBZ	Bronze	\$0.65
.027 Aluminum	LECCCLONE	RECCCLONE	Copper Clone	\$1.30
.027 Aluminum	LECCHR	RECCHR	Charcoal	\$0.65
.027 Aluminum	LECCLAY	RECCLAY	Clay	\$0.65
14 oz Copper	LECCPR	RECCPR	Copper*	\$5.16
.027 Aluminum	LECGRN	RECGRN	Green	\$0.65
.027 Aluminum	LECLG	RECLG	Light Gray	\$0.65
.027 Aluminum	LECMB	RECMB	Musket Brown	\$0.65
.027 Aluminum	LECRB	RECRB	Royal Brown	\$0.65
.027 Aluminum	LECRED	RECRED	Red	\$0.65
.027 Aluminum	LECTAN	RECTAN	Tan	\$0.65
.027 Aluminum	LECWH	RECWH	White	\$0.65

*Minimum purchase 20 per side
*Box=100
*Copper accessories no minimum

Wings continued...

.024 Aluminum, Flat piece 4" x 11 3/4"	WNGGRN	Green	\$0.69
.024 Aluminum, Flat piece 4" x 11 3/4"	WNGLG	Light Gray	\$0.69
.024 Aluminum, Flat piece 4" x 11 3/4"	WNGMB	Musket Brown	\$0.69
.024 Aluminum, Flat piece 4" x 11 3/4"	WNGRB	Royal Brown	\$0.69
.024 Aluminum, Flat piece 4" x 11 3/4"	WNGRED	Red	\$0.69
.024 Aluminum, Flat piece 4" x 11 3/4"	WNGTAN	Tan	\$0.69
.024 Aluminum, Flat piece 4" x 11 3/4"	WNGWH	White	\$0.69

*Minimum purchase 25 pieces
*Box=100
*Used to cover any additional opening
*Copper accessories no minimum

ACCESSORIES CONTINUED...

ZIP SCREWS
#8 X 1/2" HEX



DESCRIPTION	ITEM ID	COLORS	PRICE /BAG	PRICE /BOX
#8 x 1/2" Hex 410 Stainless	1/2"HXBK	Black	\$4.91	\$45.05
#8 x 1/2" Hex 410 Stainless	1/2"HXBLUE	Blue	\$4.91	\$45.05
#8 x 1/2" Hex 410 Stainless	1/2"HXBZ	Bronze	\$4.91	\$45.05
#8 x 1/2" Hex 410 Stainless	1/2"HXCCLONE	Copper Clone	\$4.91	\$45.05
#8 x 1/2" Hex 410 Stainless	1/2"HXCHR	Charcoal	\$4.91	\$45.05
#8 x 1/2" Hex 410 Stainless	1/2"HXCLAY	Clay	\$4.91	\$45.05
#8 x 1/2" Hex 410 Stainless	1/2"HXBRS	Brass	\$18.95	\$189.50
#8 x 1/2" Hex 410 Stainless	1/2"HXGRN	Green	\$4.91	\$45.05
#8 x 1/2" Hex 410 Stainless	1/2"HXLG	Light Gray	\$4.91	\$45.05
#8 x 1/2" Hex 410 Stainless	1/2"HXMB	Musket Brown	\$4.91	\$45.05
#8 x 1/2" Hex 410 Stainless	1/2"HXRB	Royal Brown	\$4.91	\$45.05
#8 x 1/2" Hex 410 Stainless	1/2"HXRED	Red	\$4.91	\$45.05
#8 x 1/2" Hex 410 Stainless	1/2"HXTAN	Tan	\$4.91	\$45.05
#8 x 1/2" Hex 410 Stainless	1/2"HXWH	White	\$4.91	\$45.05

*Suggested Use: Attaching gutter cover to lip of gutter.
*Bags=100, Box=1000

ZIP SCREWS
#8 X 1" HEX



DESCRIPTION	ITEM ID	COLORS	PRICE /BAG	PRICE /BOX
#8 x 1" Hex 410 Stainless	1"HXBK	Black	\$6.52	\$52.80
#8 x 1" Hex 410 Stainless	1"HXBZ	Bronze	\$6.52	\$52.80
#8 x 1" Hex 410 Stainless	1"HXCHR	Charcoal	\$6.52	\$52.80
#8 x 1" Hex 410 Stainless	1"HXRB	Royal Brown	\$6.52	\$52.80
#8 x 1" Hex 410 Stainless	1"HXWH	White	\$6.52	\$52.80

*Suggested Use: Fascia mount installations.
*Bags=100, Box=1000

ZIP SCREWS
#8 X 1 1/4" SQUARE DRIVE



DESCRIPTION	ITEM ID	COLORS	PRICE /BAG	PRICE /BOX
#8 x 1 1/4" Square Drive Deck	1 1/4"SDGRN	Green	\$4.51	\$26.91

*Suggested Use: Under the shingle application.
*Bags=100, Box=1000

ZIP SCREWS
#8 X 1/2" SQUARE DRIVE



DESCRIPTION	ITEM ID	COLORS	PRICE /BAG	PRICE /BOX
#8 x 1/2" Square Drive Panhead, 410 Stainless	1/2"SDBK	Black	\$4.21	\$37.08

#8 x 1/2" Square Drive Panhead, 410 Stainless	1/2"SDBLUE	Blue	\$4.21	\$37.08
---	------------	------	--------	---------

#8 x 1/2" Square Drive Panhead, 410 Stainless	1/2"SDBZ	Bronze	\$4.21	\$37.08
---	----------	--------	--------	---------

#8 x 1/2" Square Drive Panhead, 410 Stainless	1/2"SDCCLONE	Copper Clone	\$4.21	\$37.08
---	--------------	--------------	--------	---------

#8 x 1/2" Square Drive Panhead, 410 Stainless	1/2"SDCHR	Charcoal	\$4.21	\$37.08
---	-----------	----------	--------	---------

#8 x 1/2" Square Drive Panhead, 410 Stainless	1/2"SDCLAY	Clay	\$4.21	\$37.08
---	------------	------	--------	---------

#8 x 1/2" Square Drive Panhead, 410 Stainless	1/2"SDBRS	Brass	\$18.75	\$189.50
---	-----------	-------	---------	----------

#8 x 1/2" Square Drive Panhead, 410 Stainless	1/2"SDLG	Light Gray	\$4.21	\$37.08
---	----------	------------	--------	---------

#8 x 1/2" Square Drive Panhead, 410 Stainless	1/2"SDMB	Musket Brown	\$4.21	\$37.08
---	----------	--------------	--------	---------

#8 x 1/2" Square Drive Panhead, 410 Stainless	1/2"SDRB	Royal Brown	\$4.21	\$37.08
---	----------	-------------	--------	---------

#8 x 1/2" Square Drive Panhead, 410 Stainless	1/2"SDRED	Red	\$4.21	\$37.08
---	-----------	-----	--------	---------

#8 x 1/2" Square Drive Panhead, 410 Stainless	1/2"SDTAN	Tan	\$4.21	\$37.08
---	-----------	-----	--------	---------

#8 x 1/2" Square Drive Panhead, 410 Stainless	1/2"SDWH	White	\$4.21	\$37.08
---	----------	-------	--------	---------

*Suggested Use: Attaching gutter cover to lip of gutter.
*Bags=100, Box=1000

B-2 VALLEY DIVERTERS



DESCRIPTION	ITEM ID	COLORS	PRICE/EACH
Surface Mounted	DIVB-2BK	Black	\$7.85
Surface Mounted	DIVB-2BZ	Bronze	\$7.85
Surface Mounted	DIVB-2CHR	Charcoal	\$7.85
Surface Mounted	DIVB-2LG	Light Gray	\$7.85
Surface Mounted	DIVB-2RB	Royal Brown	\$7.85

*Minimum purchase 10

BRACKET FOR 2000 SERIES LT



DESCRIPTION	ITEM ID	COLORS	PRICE/EACH
.045 Aluminum, 2" x 1 1/4"	Adaptor 2000 Series	Aluminum	\$1.79

*Suggested Use: For 2000 Series Leaf Terminator®

BOX GUTTER ADAPTOR



DESCRIPTION	ITEM ID	COLORS	PRICE/FT.
.024 Aluminum, X 58" Length	BOXRB	Royal Brown	\$0.66
14 oz Copper, X 58" Length	BOXCPR	Copper	\$3.67
.024 Aluminum, X 58" Length	BOXWH	White	\$0.66

*Minimum purchase 1 Box=100 ft. (21, 4' 10" pieces)

VINYL GUTTER COVERS



DESCRIPTION	ITEM ID	COLORS	PRICE/FT.
.110 x 500 Openings (1/8 x 1/2 grate slots) .060 Vinyl	VGCWH	White	\$1.49

*Minimum purchase 1 Box=100 ft. (26 pieces)

B-1 VALLEY DIVERTERS



DESCRIPTION	ITEM ID	COLORS	PRICE/EACH
Recessed with Holes	DIVB-1BK	Black	\$13.20
Recessed with Holes	DIVB-1BZ	Bronze	\$13.20
Recessed with Holes	DIVB-1CHR	Charcoal	\$13.20
Recessed with Holes	DIVB-1LG	Light Gray	\$13.20
Recessed with Holes	DIVB-1RB	Royal Brown	\$13.20

*Minimum purchase 10

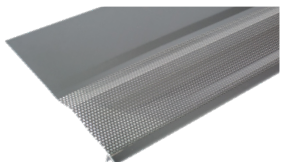
PROMO SAMPLE BOX



DESCRIPTION	ITEM ID	ALL PRODUCTS	N/C
Promotion Sample Boxes with all Products*	Promo Sample Box		N/C
Color Rings (Color chips on 1" Rings)	Color Rings		N/C

Specific samples and color rings required

LEAFLESS COVER



*While supplies last

DESCRIPTION	ITEM ID	COLORS	PRICE/FT.
.032 Aluminum 5", .096 Perforations	LLCHR5"	Charcoal	\$0.99
.032 Aluminum 5", .096 Perforations	LLG5"	Light Gray	\$0.99
.032 Aluminum 5", .096 Perforations	LLRB5"	Royal Brown	\$0.99
.032 Aluminum 5", .096 Perforations	LLWH5"	White	\$0.99
.032 Aluminum 6", .096 Perforations	LLBZ6"	Bronze	\$1.19
.032 Aluminum 6", .096 Perforations	LLRB6"	Royal Brown	\$1.19
.032 Aluminum 6", .096 Perforations	LLWH6"	White	\$1.19

*Fits 5" and 6" gutters, 36" x 8.25", 180' per box
*Fits 6", 7" and 8" gutters, 36" x 11.5", 90' per box
*Minimum purchase 1 Box

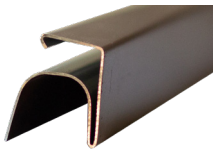
ROOF EDGING



DESCRIPTION	ITEM ID	COLORS	PRICE/FT.
.024 Aluminum, 3" X 2" X 96" Width, 180° Edges for Strength	EDGINGWH	White	\$0.68*
.024 Aluminum, 3" X 2" X 96" Width, 180° Edges for Strength	EDGINGRB	Royal Brown	\$0.68

*Minimum purchase 1 Box=200 ft. (25, 8' pieces)

HALF ROUND ADAPTOR



DESCRIPTION	ITEM ID	COLORS	PRICE/FT.
.024 Aluminum, X 58" Length	HALFRB	Royal Brown	\$0.66
14 oz Copper, X 58" Length	HALFCPR	Copper	\$3.67
.024 Aluminum, X 58" Length	HALFWH	White	\$0.66

*Minimum purchase 1 Box=100ft (21, 4' 10" pieces)

SHOWROOM DISPLAYS

STANDS



DESCRIPTION	ITEM ID	COLORS	PRICE/EACH
Display Stands	18"BK	Black	\$388.00
Display Stands	18"RED	Red	\$388.00
Display Stands	30"BK	Black	\$438.00
Display Stands	30"RED	Red	\$438.00
Display Stands	60"BK	Black	\$810.00
Display Stands	60"RED	Red	\$810.00
Display Stands	72"BK	Black	\$878.75

DISPLAY UNITS



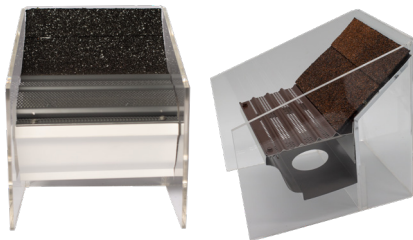
DESCRIPTION	ITEM ID	COLORS	PRICE/EACH
Display Units	18"BK	Black	\$564.00
Display Units	18"RED	Red	\$564.00
Display Units	30"BK	Black	\$720.00
Display Units	30"RED	Red	\$720.00
Display Units	30"YLV	Yellow	\$720.00
Display Units	60"BK	Black	\$898.00
Display Units	60"RED	Red	\$898.00
Display Units	60"YLV	Yellow	\$898.00

DISPLAY UNITS WITH STANDS



DESCRIPTION	ITEM ID	COLORS	PRICE/EACH
Display Units with Stands	18"BKSTAND	Black	\$952.00
Display Units with Stands	18"REDSTAND	Red	\$952.00
Display Units with Stands	30"BKSTAND	Black	\$1158.00
Display Units with Stands	30"REDSTAND	Red	\$1158.00

SINK UNITS



DESCRIPTION	ITEM ID	COLORS	PRICE/EACH
Sink Unit Display	10"	Shingles	\$46.00
Sink Unit Display	10"FLAT	Flat Roof	\$49.00
Sink Unit Display	10"METAL	Metal Roof	\$49.00
Sink Unit Display	UNITCOMM	Commercial	\$55.56

